

How to prepare Files for the RISO to print with Photoshop/Illustrator:

for multicolored files:

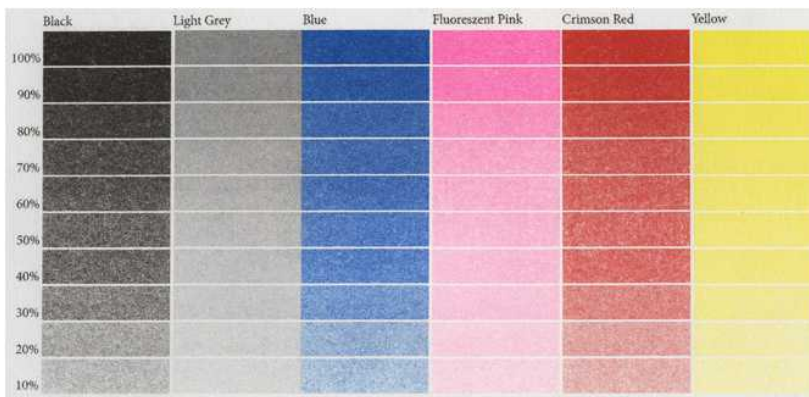
Start with setting up one layers for each color in Photoshop or Illustrator. Name the layers with the specific color, after your file is greyscale, it's easy to confuse the layers and colors.

Printfiles always as greyscale / black'n'white setting
Bild --> Modus --> Graustufen

100% black = full saturation of color
50% grey = 50% saturation

...

6 basic colors: printed in 10 – 100% saturation



project specific color scale



Printing below 20% saturation is super light!

Files will be printed a little bit lighter in color tone as they seem on the computer screen, so it's better to work with extra contrast and rather a bit too dark.



3-colored Project:
Pink – Yellow – Blue as basic
(Purple – Green – Orange are mixed between the three)

The order in which you want to print the colors, is best to be decided when we start printing. So while preparing your files you don't have to mind that (f.ex the order of the layers doesn't matter).

If you prepared your drawings analog in multiple colors, you can divide the channels in Photoshop. You can find an instruction for that on the RISO-Yeah! Homepage in the info section.

www.riso-yeah.weebly.com/infos --> Kanaltrennung

Example, CMYK printet photo, screened (Pink, Yellow, Blue, Black):



It's definitely easier to work digitally with your Illustrations or Graphics if you want to print them in RISO. At least partly. f.ex. Analog drawn outlines and then color the files digitally. Or you generally work with digital drawing/painting ... But just work the way you are used to it and we will find the best solution for you to print your files and projects.

When you change a colored file to grayscale in Photoshop, the saturation will get lighter. In that case, you have to work with more contrast and make it darker.

Questions: risoriso@riseup.net
Have fun! I'm excited about your Projects.